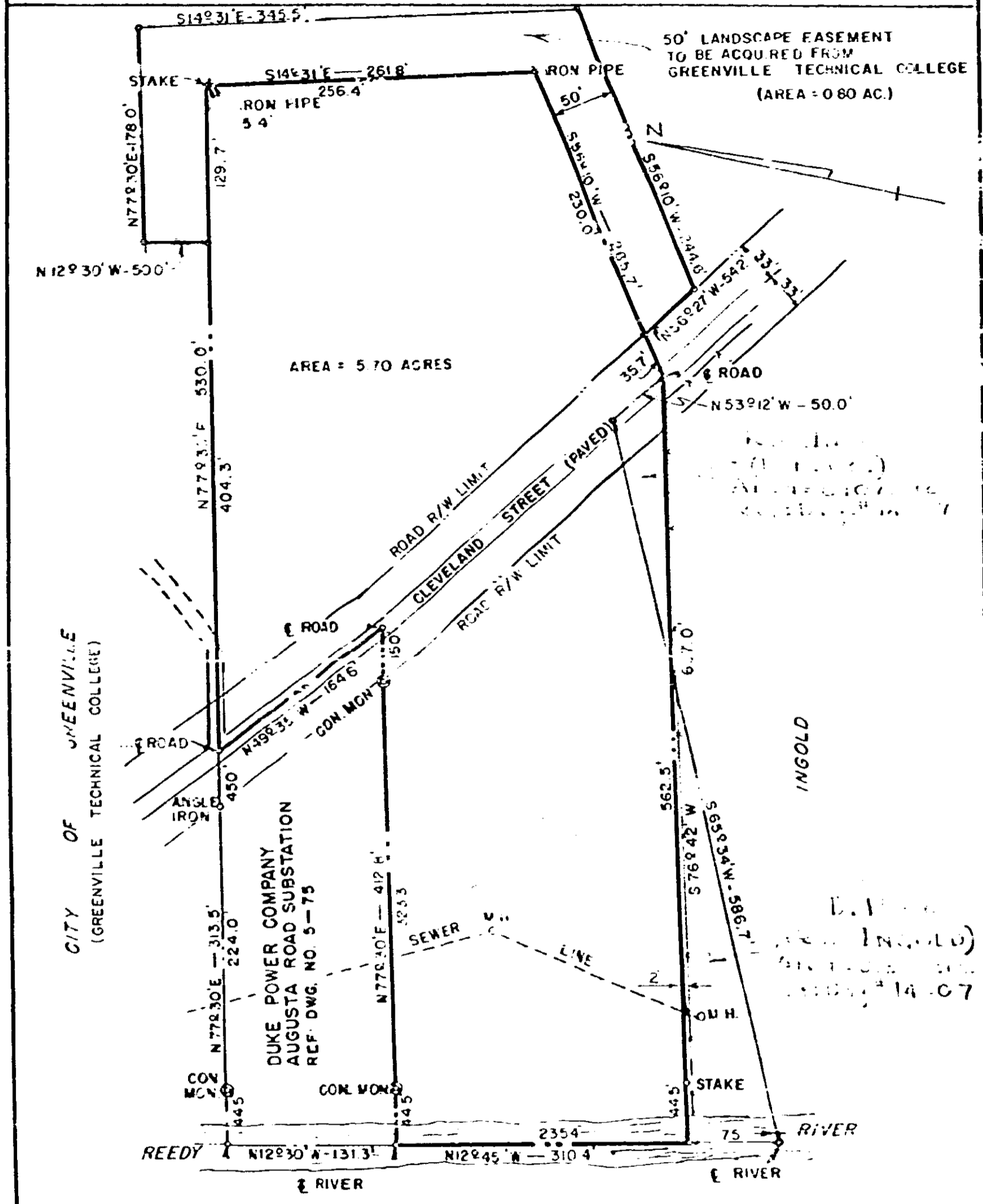


BOOK 1148 PAGE 386



Dwg. No. 10 Top. 10-10-79
 50' LANDSCAPING STRIP
 ADDED 10-10-79

DUKE POWER COMPANY
 ADDITION TO
 AUGUSTA ROAD SUBSTATION LOT
 ACQUIRED FROM
 E. W. POWER
 GREENVILLE, S.C.

SCALE: 1"=100'
 BOOK NO 40891571
 JAN. 18, 1954
 FILE NO. 13-156

322711

Recorded May 20, 1981 at 12:30 P.M.

0.386

4328 RV.2